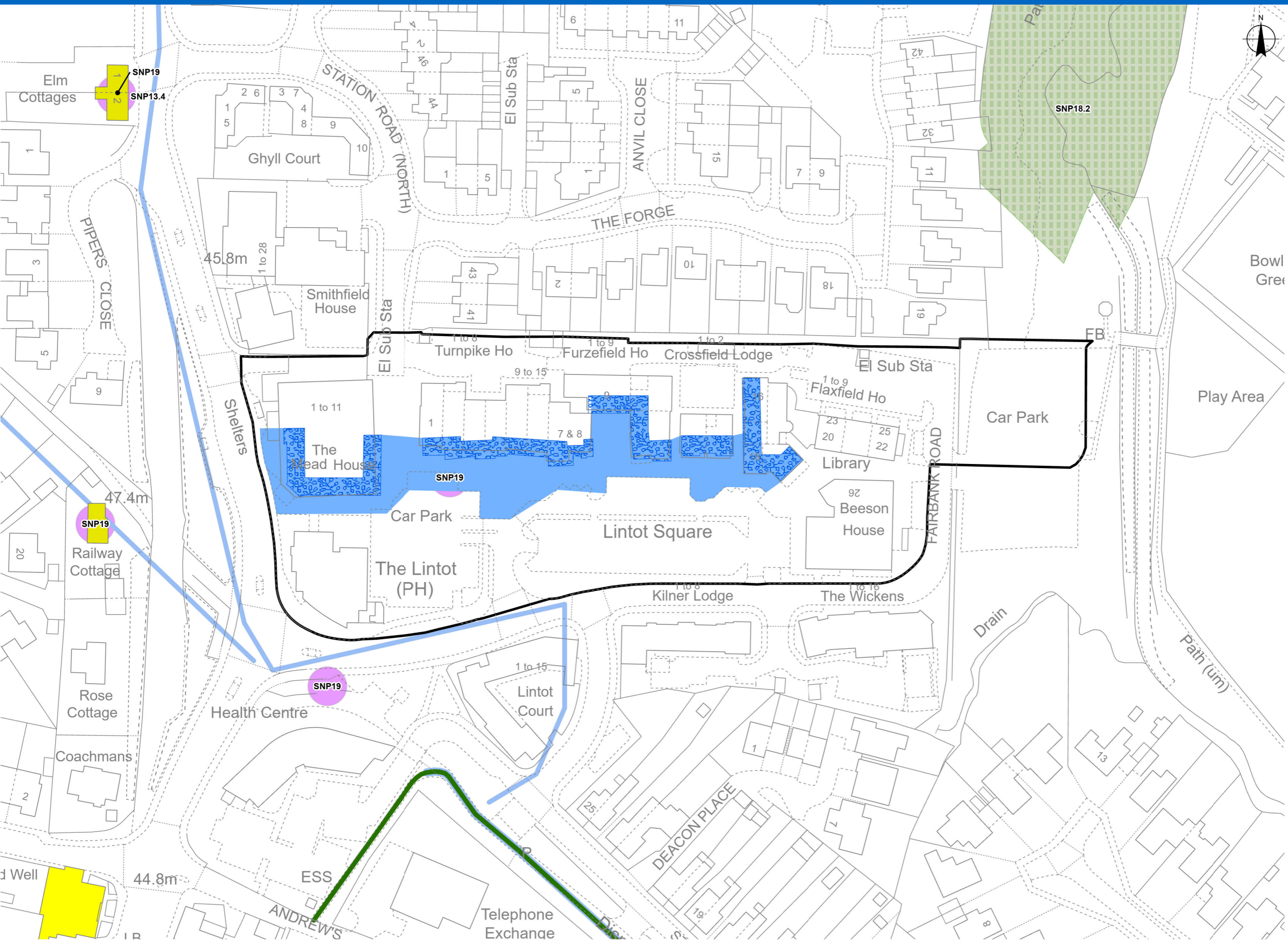


**Southwater Neighbourhood Plan Allocations**

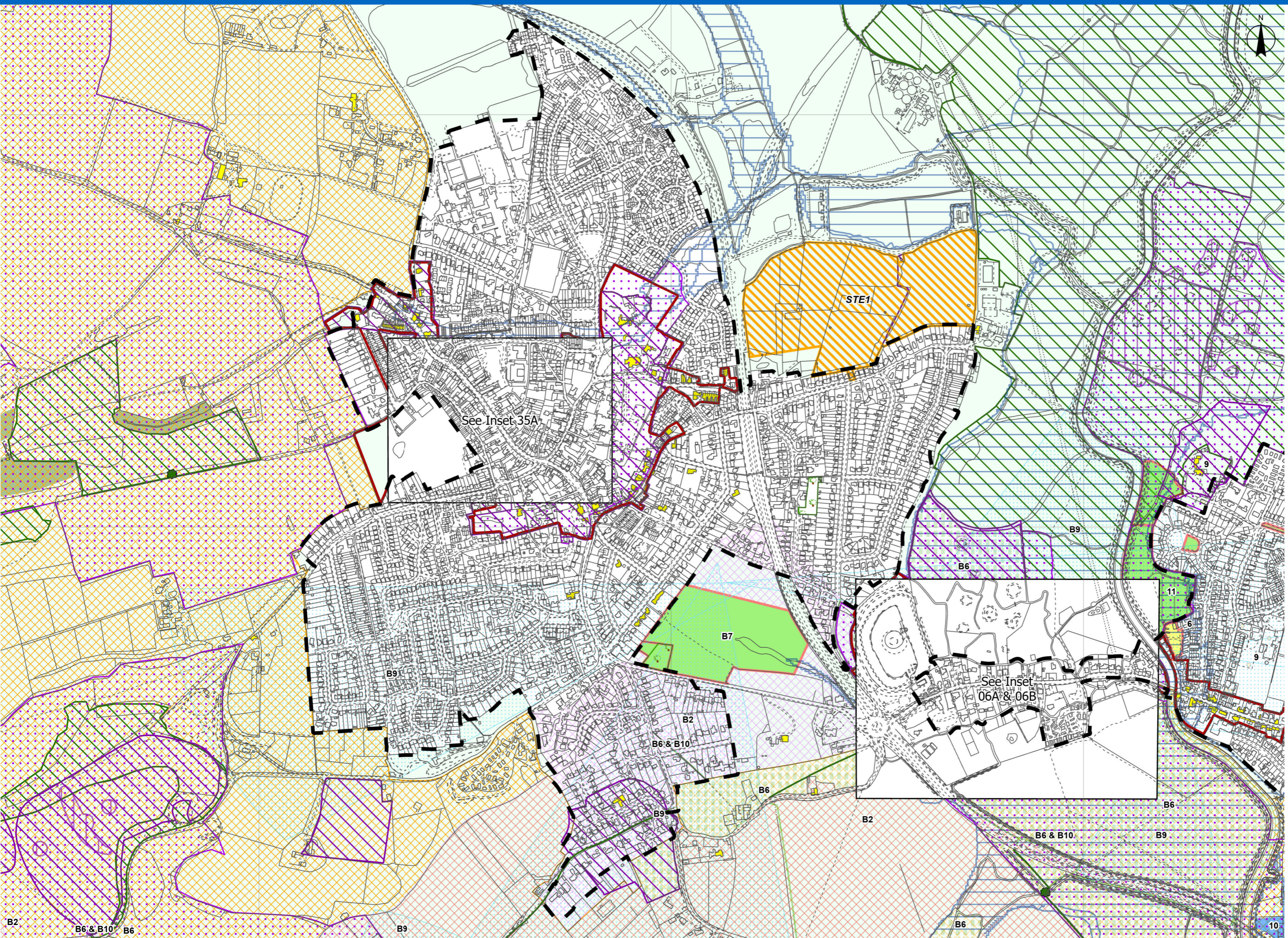
- Ancient Woodland: Policy SNP18.2 – A Treed Landscape
  - Formal/Informal Sports Areas: Policy SNP7 – Christ’s Hospital NW Playing Fields; Christ’s Hospital Southern Playing Fields; Denne Park Recreational Area; New (2019) Cricket Pitch; New (2019) Sports Field; Playing Fields off Coltstaple Lane; Southwater Leisure Centre Open Space
  - Housing Site Allocation: Policy SNP2.2 – Land West of Southwater
  - Local Community Space: Policy SNP6 – Blakes Farm Field Bund; – Buttercup Way Play Area; Castletwood Road Bund; Charlock Way Open Space; Church Lane Green Space; Corfe Close Open Space; Cornflower Way Playground; Denne Park – Toboggan Run; Edinburgh Close Play Area; Eversfield Green Corridor; Eversfield Open Space; Green Space adj Foxfield Cottages; Pevensey Road Play Area; Raylands Caravan Park Green Space; Roman Lane & Turners Close Open Space; Woodlands Way Open Spaces
  - Local Green Space: Policy SNP5 - Old Stalkers Lane (East of Cripplegate Lane); Allotments East of Easteds Lane; Allotments behind Village Hall; Butterfly Garden; Cedar Drive Open Space; Christ’s Hospital Green Space; Informal Nature Reserve adj Chesworth House; East of Easteds Lane; Larkspur Way Open Space; Nutham Lane Open Space; Open Space East of Nyes Lane; Swan Close Open Space; Woodlands Way Open Space
  - Parish Employment Area: Policy SNP21 – Southwater Business Park
  - Parish Heritage Asset: Policy SNP19 – The Ecclesiastical Footpath between Boar’s Head & Tower Cottage; Christ’s Hospital Station Goods Shed; Denne Parkland; Station Cottages at Christ’s Hospital Station; Bax Castle Pub, Two Mile Ash; Calcot, Worthing Road; Cripplegate Mill Stone, Cripplegate Lane - Location TBC; Disused Railway (Downs Link) & Old Railway Bridges; Easteds Barn, Easteds Lane; Edwardian Railway Cottages, Station Road; Elm Cottage, Worthing Road; Hen & Chicken Pub; Iggy the Dinosaur, Lintot Square - Location TBC; Old Brick Yard Gates & War Memorial, Lintot Square; Old Post Office, Worthing Road; Old School House, Worthing Road; Pump Cottage, Worthing Road; Roman Bridge, Pond Farm Ghyll - Location TBC; Southwater Village Hall; Ye Olde Barn, Worthing Road
  - Promoted Route: Policy SNP13.4 – Enhancing Non-motorised Transport Network
  - Safeguarded Land: Policy SNP3 – Safeguarding of Land for Secondary School
  - Southwater Country Park: Policy SNP8
- Horsham Town (unparished area) Neighbourhood Plan Allocations**
- Policy HB10 – Green Infrastructure; Associated Green Infrastructures; Cemeteries; Green Infrastructure identified by Horsham Society; Rivers; St Leonards Park Ponds SSSI; Ancient Woodland; Warnham Local Nature Reserve
- Nuthurst Neighbourhood Plan Allocations**
- Local Green Space: Policy.13viii - Land surrounding Copsale Hall, Bar Lane



**Southwater Neighbourhood Plan Allocations**

- Ancient Woodland: Policy SNP18.2 – A Treed Landscape
- Parish Heritage Asset: Policy SNP19 – The Ecclesiastical Footpath between Boar’s Head & Tower Cottage; Christ’s Hospital Station Goods Shed; Denne Parkland; Station Cottages at Christ’s Hospital Station; Bax Castle Pub, Two Mile Ash; Calcot, Worthing Road; Cripplegate Mill Stone, Cripplegate Lane - Location TBC; Disused Railway (Downs Link) & Old Railway Bridges; Easteds Barn, Easteds Lane; Edwardian Railway Cottages, Station Road; Elm Cottage, Worthing Road; Hen & Chicken Pub; Iggy the Dinosaur, Lintot Square - Location TBC; Old Brick Yard Gates & War Memorial, Lintot Square; Old Post Office, Worthing Road; Old School House, Worthing Road; Pump Cottage, Worthing Road; Roman Bridge, Pond Farm Ghyll - Location TBC; Southwater Village Hall; Ye Olde Barn, Worthing Road
- Promoted Route: Policy SNP13.4 – Enhancing Non-motorised Transport Network





- Bramber Neighbourhood Plan Allocations**
- Character Areas: Policy B2 – Annington & Botolphs; Maudlyn; The Street
  - Green Infrastructure/ Sustainable Movement Routes: P. B6 Major Paths/ P. B10 Encouraging Sustainable Movement
  - Green Infrastructure: Policy B6 – Other Green Spaces; Priority Habitats Index (Deciduous Woods; Grassland; Grazing); Sites of Nature Conservation Importance
  - Local Green Space: Policy B7 Clays Field; Heathens' Burial Corner
- Locally Significant Views: Policy B9 – Annington Hill from Clays Field; Botolphs & South Downs from Tinpots; Botolphs Church & South Downs from River Adur; Bramber Brooks from Bramber Castle; Bramber Castle from Bramber Brooks Nature Reserve; South Downs & South Downs Way from Beeding Hill; St Mary's Field & South Downs from Beeding Bridge; Steyning Bowl from South Downs Way; Steyning Round Hill from Clays Field; The Street & South Downs from the Church; Truleigh Hill from Clays Field; Upper Beeding & Bramber from Beeding Hill

- Upper Beeding Neighbourhood Plan Allocations**
- Community Facilities: Policy 9 – Allotments, Upper Beeding; Beeding & Bramber Village Hall; Gladys Bevan Hall, Upper Beeding; HUB Café, Upper Beeding; Hillside Scout Camp, Small Dole; Small Dole Village Hall; The Fox Public House, Small Dole; Memorial Playing Fields, Upper Beeding; Old School Building, Upper Beeding; Sports & Youth Room, Upper Beeding; Sports Pavilion, Old School, Upper Beeding; St. Peter's Parish Church, Upper Beeding; The Kings Head Public House, Upper Beeding; The Rising Sun Public House, Upper Beeding; Towers Convent, Upper Beeding; Upper Beeding Baptist Church; Upper Beeding Football & Cricket Clubs; Upper Beeding Primary School; Upper Beeding Surgery
  - Employment Sites: Policy 10 – Beeding Court Business Park; Newbrook Works, Pound Lane, Upper Beeding; The Courtyard, Shoreham Road, Upper Beeding
  - Housing Site Allocation: Policy 3 – Land East of Pound Lane, Upper Beeding; Policy 5 – Greenfields, Henfield Road, Upper Beeding; Policy 6 – Riverside Caravan Park, Upper Beeding; Policy 7 – Valerie Manor, Henfield Road, Upper Beeding
  - Local Green Space: Policy 11 – Hyde Street Green; Part of Priory Fields Green; Pepperscombe Lane; Saltings Field; St Peter's Green & Floodplain

